

## BWF REGRIND

### Sustainable plastics production



BWF Profiles always ensures highly efficient resource recycling. This means our production waste is reprocessed into recyclable raw materials, which then flow back into the life cycles of new plastic products: BWF REGRIND!

During the extrusion of plastic profiles, there is always material that appears worthless at first glance. This includes, for example, material for adjustment runs and start-up processes, or profiles that are not dimensionally accurate. However, this material is not at all worthless, but on the contrary it still continues to be a high-quality VALUE material. In this way, we not only reduce our production and material waste, but also make a valuable contribution to the sustainable production of plastic products.

#### YOUR ADVANTAGES AT A GLANCE



smooth or satin-  
finished surface



identical  
surface quality



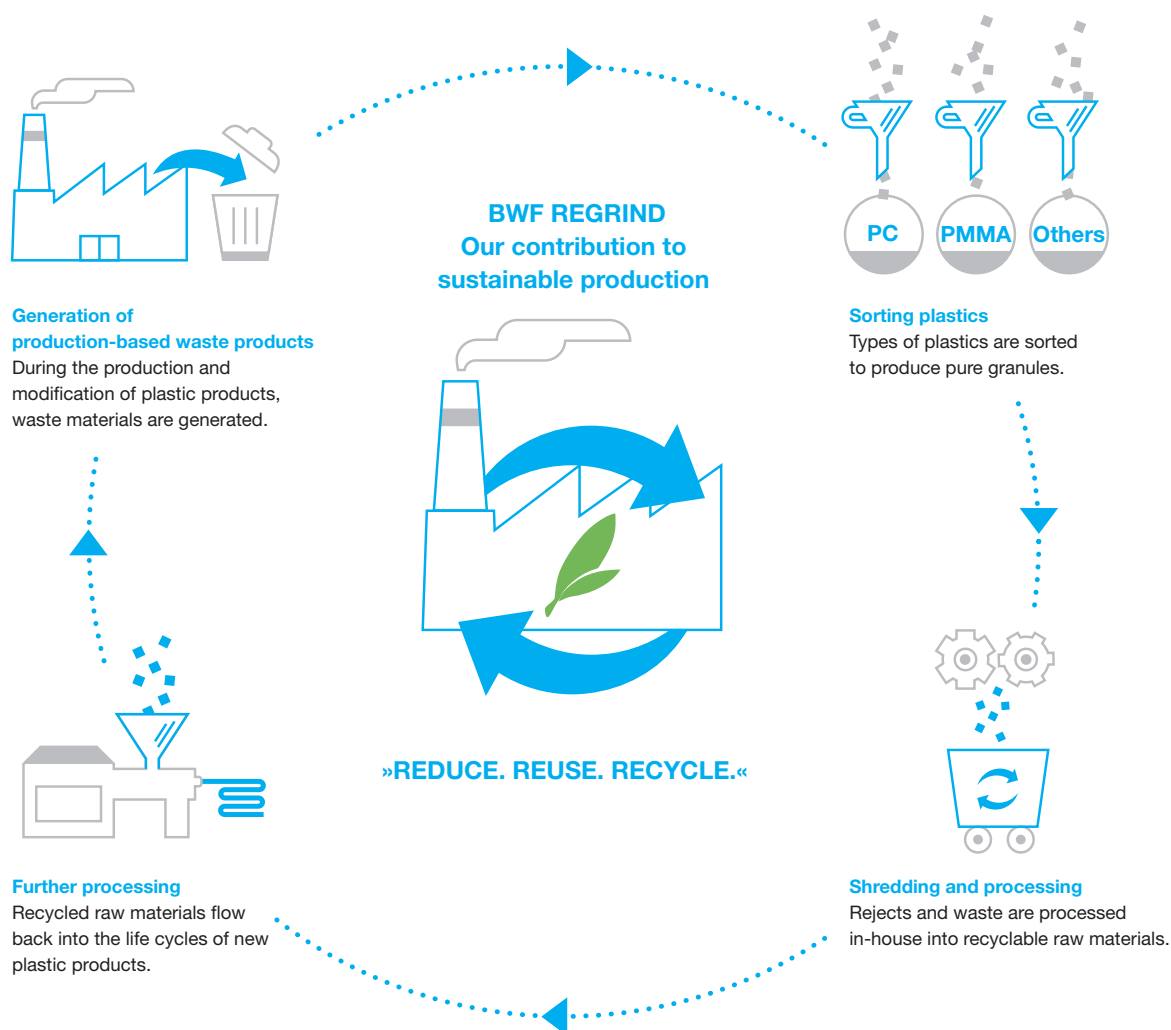
colouring  
possible

#### GENERAL INFORMATION

<b>Recycling rate</b>	up to 25%
<b>Material</b>	PC & PMMA (more material on request)
<b>Colouring</b>	clear, diffuse, coloured
<b>Surface</b>	smooth & satin



## SUSTAINABLE RESOURCE UTILISATION AT BWF PROFILES



**BWF Kunststoffe GmbH & Co. KG**

Bahnhofstraße 20

89362 Offingen

Germany

T +49 8224 71-990

info@bwf-profiles.com

[www.bwf-profiles.com](http://www.bwf-profiles.com)